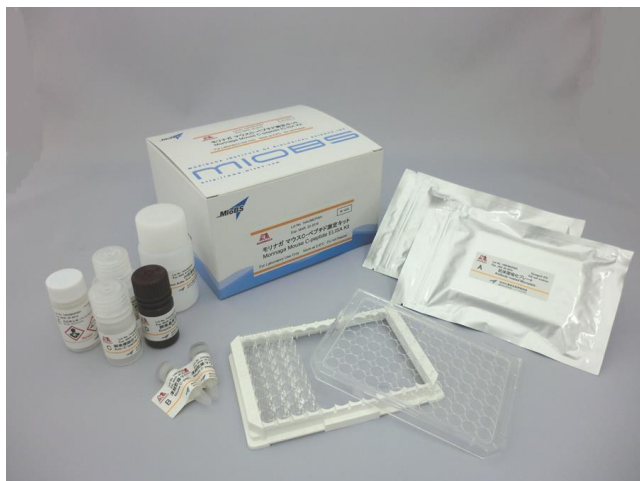


Mouse C-peptide ELISA Kit



【Intended Use】

The Morinaga Mouse C-peptide ELISA Kit is for the quantitative determination of C-peptide in mouse serum, plasma, and fluid. Please read the complete kit insert before performing this assay. The kit is for *Laboratory Use Only*. It is not intended for use in diagnostic procedures.

【Introduction】

C-peptide is formed from pro-insulin and co-secreted with insulin. Measuring the amount of C-peptide is useful as an index of insulin secretion. The Morinaga Mouse C-peptide ELISA Kit is a simple, precise, and sensitive ELISA sandwich assay for mouse C-peptide.

【Assay flow】

Preparation of standard and samples

↓ Dispense 95μL of Sample Diluent per well. Pipette 5μL of the sample (or working standards) per well.

First reaction

↓ Room Temperature (20-30°C), 1 hour.

Second reaction

↓ Room Temperature (20-30°C), 1 hour.

Enzyme reaction

↓ Room Temperature (20-30°C), 30minutes in dark.
Stop enzyme reaction.

Measurement of absorbance

【Precision】

The intra-assay precision (C.V.) : $\leq 10\%$
The inter-assay precision (C.V.) : $\leq 10\%$
The Lot to Lot precision (C.V.) : $\leq 10\%$

【Characteristics of Kit】

- **Sample size**

Only 5 μ L

- **Sample**

Serum, plasma, or fluid

- **Test**

96 wells (8 wells x 12 modules)

- **Reagents**

In liquid form (except standard)

- **Assay range**

0.1-6.4ng/mL

- **Assay time**

Same day procedure

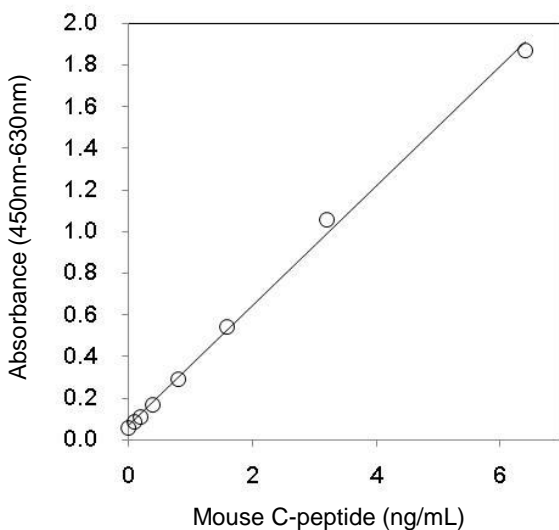
- **Recovery**

When mouse C-peptide was spiked in a 5 μ L mouse serum sample, the recovery was 100% \pm 20%.

【Specificity】

Substance	Reactivity
Mouse Insulin	Not Detected

【Typical Standard】



	Name of component	Content	Quantity
A	Antibody-coated microplate module (One module consists of 8 wells)	6 modules / pack	2 packs
B	Mouse C-peptide Standard, Lyophilized	2.56ng/vial	2 vials
C	Anti-C-peptide Enzyme Conjugate Stock Solution	13 mL	1 bottle
D	Enzyme Substrate (TMB) Solution*	13 mL	1 bottle
E	Stop Solution (1 N Sulfuric Acid)	13 mL	1 bottle
F	Sample Diluent	30 mL	1 bottle
G	Wash Buffer Stock Solution (20X Concentrate)	50 mL	1 bottle
	Frame for affixing the microplate well module		1 piece
	Plastic microplate cover		1 piece

TMB solution* : Avoid exposure to light.

【Other required reagents and instruments】

Micropipettes and disposable tips

Volumetric flasks

Distilled or deionized water

Polypropylene microtubes

Test tube racks

Vortex mixer

Aspirator for washing procedure

Microplate reader

(capable of measuring A450 and A630 values)

【Contact us】

Morinaga Institute of Biological Science, Inc.

2-1-16 Sachiura, Kanazawa-ku

Yokohama 236-0003, Japan

e-mail: info@miobs.com