



V.1/JAN/2023

## Almond ELISA Kit II

The Quantitative Determination for  
Almond Protein in Food

96 Assays

***For Research or Laboratory Use Only.  
Not for Use in Diagnostic Procedures.  
Please read full descriptions in this manual before use.***

**Manufactured by:**

Morinaga Institute of Biological Science, Inc. (MioBS)  
2-1-1 Shimosueyoshi, Tsurumi-ku, Yokohama 230-8504, Japan

**E-mail: [info\\_miobs\\_e@morinaga.co.jp](mailto:info_miobs_e@morinaga.co.jp)**

**Website: <https://www.miobs-e.com>**

JP.PAT.P5451854

US.PAT.8859212

AU.PAT.2008330507

EP.PAT.2224239

(AT,BE,DE,ES,FR,GB,IT,NL,CH)

## TABLE OF CONTENTS

INTENDED USE AND USER .....	3
PRINCIPLE OF ELISA .....	3
KIT COMPONENTS .....	4
REQUIRED MATERIALS (NOT INCLUDED) .....	4
PERFORMANCE CHARACTERISTICS .....	4
REAGENT PREPARATION .....	5
ASSAY PROTOCOL .....	6
<i>Summary of Procedure</i> .....	8
RESULTS AND INTERPRETATION .....	9
TYPICAL STANDARD CURVE .....	9
STORAGE CONDITIONS AND EXPIRY OF KIT .....	10
WARNINGS AND PRECAUTIONS .....	10
TECHNICAL ASSISTANCE .....	11
WARRANTY.....	11

For optimal results, follow instructions exactly. Failure to do so may lead to inaccurate results.

Reproducible results depend on careful pipetting technique, maintaining incubations at the specified temperature for the specified time, complete washing, and thorough mixing of all solutions.

### **INTENDED USE AND USER**

Almond ELISA Kit II is a sandwich enzyme immunoassay for the quantitative determination of almond protein (11S globulin as a marker for almond protein) in processed or unprocessed food. This kit is designed to be used by quality control personnel or other trained professionals.

Table 1 : Detectable protein in this kit

<b>Kit</b>	<b>Antigen</b>	<b>Detectable Protein</b>
Almond ELISA Kit II	11S globulin	Whole almond protein

### **PRINCIPLE OF ELISA**

Almond protein in the samples is extracted, centrifuged and filtered prior to the sandwich ELISA. Antigen is bound to the polyclonal antibody coated wells of the microplate module. This results in the formation of an antigen-antibody complex in the wells. Unbound materials are removed by washing. Subsequently, the enzyme-conjugated monoclonal antibody is bound to the already bound antigen-antibody complex, forming an antibody-antigen-antibody sandwich. A second washing step removes the excess conjugated antibody. Addition of enzyme substrate results in color development due to the enzyme bound to the complex. After addition of the stop solution, the color intensity of the solutions can be determined by the absorbance at 450 nm. The intensity of the color developed is directly proportional to the concentration of the almond protein in the food. The concentration of almond protein corresponding to the measured absorbance is determined by preparing a standard curve, and adjusting for a further dilution factor if necessary.

## **KIT COMPONENTS**

Label	Name of component		Content	Quantity
A	Reagent A (10X Concentrate)		100 mL	1 bottle
B	Reagent B (10X Concentrate)		100 mL	1 bottle
C	Reagent C (10X Concentrate)		100 mL	1 bottle
D	Antibody-coated Microplate Module		6X8 well modules	2 packs
E1	Almond Standard (ready-to-use)	0 ppb	1.2 mL	1 vial
E2		0.5 ppb		1 vial
E3		5 ppb		1 vial
E4		10 ppb		1 vial
E5		25 ppb		1 vial
F	Enzyme-conjugated Antibody		13 mL	1 bottle
G	Enzyme Substrate (TMB Solution)		13 mL	1 bottle
H	Stop Solution (1N Sulfuric Acid)		13 mL	1 bottle
I	Wash Buffer (20X Concentrate)		50 mL	1 bottle
	Frame for mounting the microplate module			1 piece
	Microplate seal			3 sheets

## **REQUIRED MATERIALS (NOT INCLUDED)**

1. Distilled water (or deionized water)
2. Micropipettes and disposable tips ranging from 50 to 1000  $\mu$ L
3. Graduated cylinders
4. Polypropylene centrifuge tubes (50 mL size) for sample extraction
5. Polypropylene micro tubes (1–2 mL size) for dilution of sample
6. pH test paper
7. Homogenizer/blender for sample preparation (if necessary)
8. Water bath for boiling or horizontal shaker, for sample extraction
9. Centrifuge
10. Vortex mixer
11. Aspirator for washing procedure, or optional microplate washer
12. Microplate reader with a 450 nm filter, and a filter for any wavelength from 600 to 650 nm, inclusive

## **PERFORMANCE CHARACTERISTICS**

Almond ELISA Kit II is a tool to determine the presence of almond protein in foods.

Sample preparation time	Approx. 10 min
Sample extraction time	Approx. 30 min
Time for ELISA analysis	Approx. 2 h
Assay sensitivity	0.2 ppm (0.2 $\mu$ g almond protein/g food)
Detectable concentration range	0.5 to 25 ppb almond protein

## REAGENT PREPARATION

### Sample Extraction Solution

Prepare the **Sample Extraction Solution** by mixing **Reagent A (A)**, **Reagent B (B)**, **Reagent C (C)** and distilled water at a ratio of 1:1:1:7. The following example would prepare enough **Sample Extraction Solution** to assay 16 samples:

<b>Reagent A (10X Concentrate) (A)</b>	40 mL
<b>Reagent B (10X Concentrate) (B)</b>	40 mL
<b>Reagent C (10X Concentrate) (C)</b>	40 mL
Distilled water	280 mL
Total	400 mL

### Note:

a. **Reagent A (A)** may produce crystals after refrigerated storage. These crystals must be re-dissolved completely in a water bath at 30-37°C (86-99°F) prior to use. The fully re-dissolved **Reagent A** can be stored at 20-30°C (68-86°F).

b. **Sample Extraction Solution** can be stored at 4°C for preparing **Diluent II**. If **Sample Extraction Solution** forms a precipitate after refrigerated storage, then the solution must be warmed in a water bath at 20-30°C (68-86°F) to re-dissolve the precipitate prior to use.

### Diluent I

**Diluent I** is used for preparing **Diluent II** and for diluting the **Sample Extract**.

Dilute **Reagent C (C)** 10-fold with distilled water.

The following is an example of preparing **Diluent I**:

<b>Reagent C (10X Concentrate) (C)</b>	5 mL
Distilled water	45 mL
Total	50 mL

### Diluent II

**Diluent II** is used to dilute the **Working Sample Solution**.

Dilute **Sample Extraction Solution**, 20-fold with **Diluent I**.

The following is an example of preparing **Diluent II**:

<b>Sample Extraction Solution</b>	1 mL
<b>Diluent I</b>	19 mL
Total	20 mL

### Washing Solution

Dilute **Wash Buffer (I)** 20-fold with distilled water, and gently mix until the solution is homogeneous.

## **ASSAY PROTOCOL**

It is strongly recommended to use disposable polypropylene tubes, and care should be taken to clean up all equipments and materials so as to be free from cross-contamination, since the assay is highly sensitive.

### **a. Sample Preparation**

1. Grind and mix up the test food sample to homogeneity with a contamination-free homogenizer/blender.
2. A disposable polypropylene centrifuge tube, containing 1.0 g of the homogenized sample and 19 mL of **Sample Extraction Solution**, is capped tightly and vortexed for 30 seconds.
3. Incubate capped tube in a boiling water bath at 100°C (212°F) for 10 minutes.
4. Place the tube in running water to cool it down to ambient temperature (approximately 10 minutes).
5. Vortex the tube for 30 seconds.
6. Check the fluid pH with pH test paper, and neutralize (pH 6-8) with HCl or NaOH, if required.
7. Centrifuge the tube at 3,000×g for 20 minutes at 20-30°C (68-86°F), and the supernatant is retained as **Sample Extract**. (Filter the supernatant with filter paper, if necessary.)
8. Dilute the **Sample Extract** 20-fold with **Diluent I** (see REAGENT PREPARATION), and the diluted solution is used as the **Working Sample Solution** for ELISA.

**Note:** If further sample dilution is required, dilute the **Working Sample Solution** with **Diluent II**.

### **b. ELISA**

#### **(First reaction)**

1. Unseal the **Antibody-coated Microplate Module (D)** after equilibrated to room temperature (20-30°C, 68-86°F). Fix the module to the mounting frame (supplied).
2. Into each well, dispense 100 µL of standards (0, 0.5, 5, 10 and 25 ppb **Almond Standard, E1-E5**) and **Working Sample Solution**, in (at least) duplicate.

**Note:** *Working Sample Solution presumed to be greater than 25 ppb should be diluted with **Diluent II** (ASSAY PROTOCOL a.8, Note).*

3. Cover the microplate with a microplate seal (supplied).
4. Incubate for 1 hour at 20-30°C (68-86°F).

#### **(Second reaction)**

1. Remove the solution completely from each well by aspiration. (OR: Carefully pour the liquid out of the wells and tap the microplate frame upside down vigorously five times on paper towels to ensure complete removal of liquid from wells.)
2. Wash six times, by adding 300 µL **Washing Solution** per well followed by aspiration. After washing, remove any remaining solution by inverting and tapping the plate on a clean paper towel. (OR: Fill all the wells (300 µL of the **Washing Solution** in each), pour out the liquid again and tap. Repeat five more times.)
3. Add 100 µL **Enzyme-conjugated Antibody (F)** to each well.

4. Cover the microplate with a microplate seal and incubate for precisely 30 minutes at 20-30°C (68-86°F).

**(Enzyme reaction)**

1. Completely aspirate the well contents and wash six times by filling with 300 µL **Washing Solution** per well, and aspirate. After the sixth washing, remove any remaining solution by inverting and tapping the plate on a clean paper towel. (OR: Completely pour the liquid out of the wells, then fill all the wells with 300 µL of the **Washing Solution**, pour out the liquid again and tap. Repeat five more times.)
2. Immediately, dispense 100 µL of **Enzyme Substrate (G)** into each well.
3. Cover the microplate with a microplate seal and incubate for precisely 20 minutes at 20-30°C (68-86°F). During the enzyme reaction, avoid exposing the microplate to light.
4. Stop the enzyme reaction by adding 100 µL of **Stop Solution (H)** to each well.
5. Immediately measure absorbance using a microplate reader at 450 nm, subtract a reference wavelength between 600 and 650 nm, inclusive.

**Note:** *The absorbance must be measured within 30 minutes after stopping the enzyme reaction.*

## ***Summary of Procedure***

### ***(Extraction procedure)***

Grind/mince the sample



Weigh 1.0 g sample in a tube, add 19 mL ***Sample Extraction Solution***.



Incubate capped tube in boiling water for 10 minutes.



Cool down the tube and vortex for 30 sec.



Adjust pH to 6.0-8.0.



Centrifuge and filter the supernatant if necessary.



Dilute ***Sample Extract*** 20-fold with ***Diluent I***.

### ***(ELISA procedure)***

Pipette 100 µL ***Almond Standard (E1-E5)*** and ***Working Sample Solution***.



Incubate the microplate for 1 hour at 20-30°C (68-86°F).



Wash the wells 6 times with ***Washing Solution***.



Dispense 100 µL ***Enzyme-conjugated Antibody (F)***.



Incubate the microplate for 30 min at 20-30°C (68-86°F).



Wash the wells 6 times.



Dispense 100 µL ***Enzyme Substrate (G)***.



Incubate reaction for 20 min at 20-30°C (68-86°F) in the dark.



Stop the enzyme reaction by adding 100 µL ***Stop Solution (H)***.



Measure absorbance at 450 nm.



Calculate the concentration of almond protein using the standard curve.



## RESULTS AND INTERPRETATION

1. Determine the mean absorbance for each set of **Working Sample Solution** and **Almond Standard**. Use graphing software, the built-in graphing feature of the microplate reader, or graph paper to construct a standard curve by plotting the mean absorbance for each standard on the Y axis versus the corresponding standard concentration on the X axis.

**Note:** A standard curve should be generated for each assay.

For computer processing of the data, 4-parameter curve fit (Cubic regression) is recommended and a linear curve fit is also available.

2. The almond protein concentration in the **Working Sample Solution** is interpolated from the standard curve using the mean absorbance of each observation.
3. If the mean absorbance of **Working Sample Solution** is greater than the absorbance of the 25 ppb standard, increase the dilution of **Working Sample Solution** to 40-fold or greater as appropriate instead of 20-fold, and then assay again.

The almond protein content in a sample, in ppm, can be estimated using the following formula:

$$\text{Almond protein content (ppm)} = \text{OV} \times \text{Dilution A} \times \text{Dilution B} \times 1/1,000$$

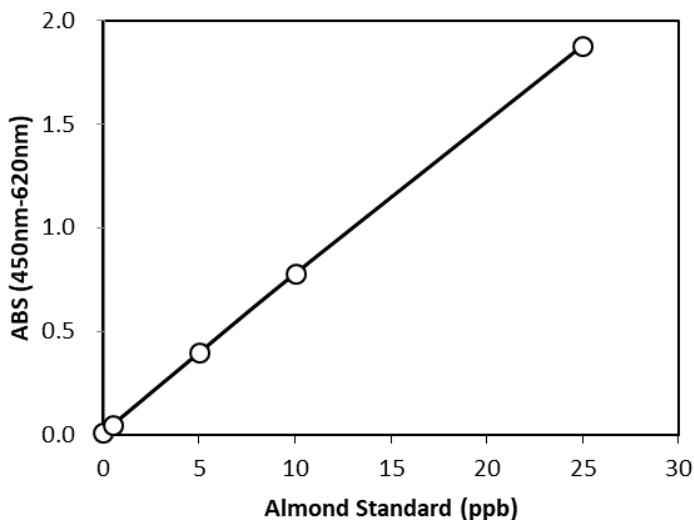
OV: Observed value (ppb)

Dilution A: Dilution for ASSAY PROTOCOL a.2, nominal 20-fold.

Dilution B: Dilution for ASSAY PROTOCOL a.8, nominal 20-fold.

## TYPICAL STANDARD CURVE

### Almond



## **STORAGE CONDITIONS AND EXPIRY OF KIT**

1. Store the kit at 2-8°C (35-46°F), but DO NOT FREEZE!
2. Use the kit at 20-30°C (68-86°F), while minimizing exposure time at this temperature. The kit must be returned to storage at 2-8°C (35-46°F) as soon as possible. Do not expose this kit to temperatures in excess of 30°C (86°F)!
3. Do not use the kit after the expiration date indicated on the outside box.

## **WARNINGS AND PRECAUTIONS**

### **(General)**

1. Almond protein is used in this kit. Users who are allergic to this protein should handle kit reagents and perform the assay with great care. In case of an allergic reaction, such as sneezing or itching, seek medical attention if the reaction is serious or prolonged.
2. This product is recommended for use only by personnel trained in analytical sample handling techniques, and is meant to be used in accordance with good laboratory practices.
3. Direct contact with **Stop Solution (H)** should be strictly avoided. In case of contact, immediately flush affected area with copious amounts of water, and seek medical attention if necessary. In case of ingestion, call the poison control center and obtain first aid treatment.
4. Because all chemicals should be considered potentially hazardous, it is advisable to wear suitable protective clothing, goggles and gloves.
5. Because the assay is highly sensitive, all the procedures should be performed in a clean environment using uncontaminated equipment/devices and tubes/containers in order to minimize the risk of cross-contamination from previous analyses.

### **(ELISA)**

1. Do not combine reagents from different lots or other kits.
2. All reagents should be equilibrated at 20-30°C (68-86°F) before use.
3. A standard curve should be generated for each assay concurrently with the samples.
4. Assays should be performed at least in duplicate to ensure confidence in the measured values.
5. Care should be taken to pipette standard solutions and samples accurately.
6. Follow all procedures carefully.
7. Washing must be thorough in order to minimize background readings. Complete removal of reagents from the microplate wells is essential.
8. The enzyme substrate reaction should be performed shielded from light.

**Note:** *In the case of processed foods, the detection efficiency or sensitivity of the assay may decrease, due to denaturation and insolubilization of almond proteins. Therefore, food samples that give a negative result may still contain almond material which is either unreactive or present*

*at concentrations below the limit of detection. It should not be assumed that such foods are almond free.*

### **TECHNICAL ASSISTANCE**

For further technical assistance or troubleshooting advice, contact Morinaga Institute of Biological Science, Inc. or your local distributor.

Morinaga Institute of Biological Science, Inc.

E-mail: [info\\_miobs\\_e@morinaga.co.jp](mailto:info_miobs_e@morinaga.co.jp)

### **WARRANTY**

Morinaga Institute of Biological Science, Inc. makes no warranty of any kind, either expressed or implied, except that the materials from which its products are made are of standard quality. Buyer assumes all risk and liability resulting from the use of this product. There is no warranty of merchantability of the product, or of the fitness of the product for any purpose. Morinaga Institute of Biological Science, Inc. agrees to replace any defective product, but expressly disclaims liability for damages, including special or consequential damages, or expenses arising directly or indirectly from the use of this product.